

Table 3.23. Effect of changing the wavelength detection by -3nm on the detection parameters in plasma.

Parameters	Amlodipine	Glimepiride	Atrovastatin
Area	847582	1291404	4040109
RSD%	0.23	0.64	0.72
Theoretical plates	4591	8125	7424
Asymmetry	1.2	1.16	1.23

Table 3.24. Effect of changing the wavelength detection by +3nm on the detection parameters in plasma.

Parameters	Amlodipine	Glimepiride	Atrovastatin
Area	820964	1274503	4015214
RSD%	0.29	0.42	0.50
Theoretical plates	4524	7978	7290
Asymmetry	1.22	1.18	1.24

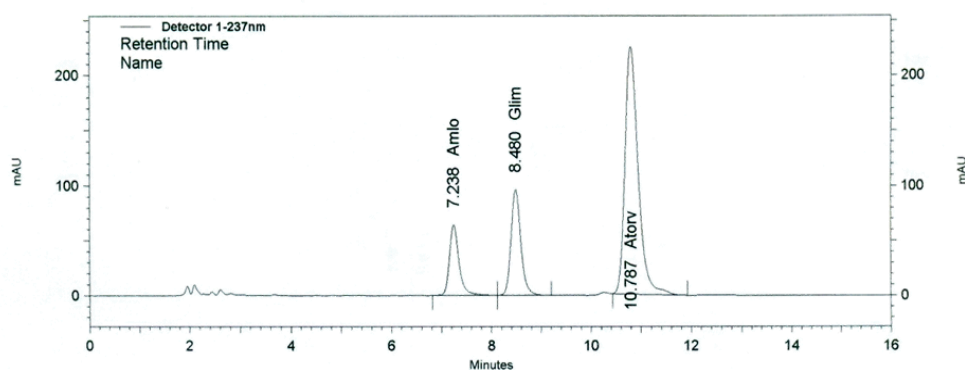


Figure 3.16 Chromatogram of amlodipine, glimepiride, and atorvastatin in plasma using 234 nm wavelength